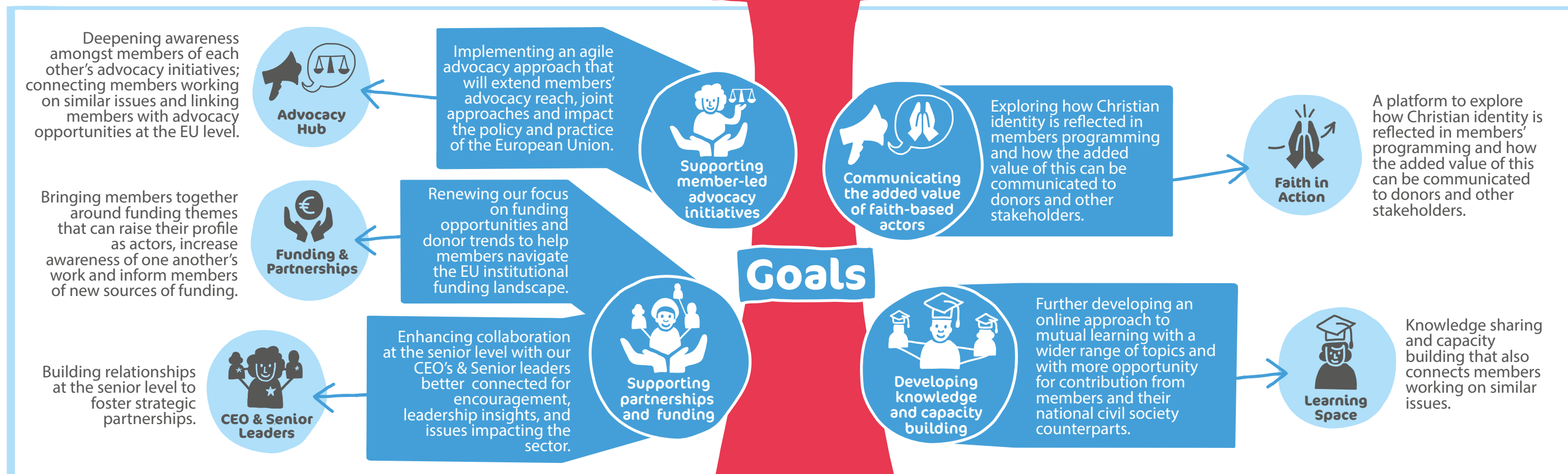


Strategic Direction 2022+



Mission
Christian organisations collaborating for a transformed, just, and equal world.

programme portfolio



cross-cutting themes

Impact of the climate crisis

Communicating the impact that the climate crisis is having on the communities where we work.

Disability inclusion

Advocating for the EU to uphold its commitments under the UN CRPD and SDGS - leave no one behind.

Re-framing partnerships

Re-frame our understanding and approach to work more inclusively with local actors, including faith actors, disabled-peoples organisations, and other representative groups

Role of faith actors

Communicate the role and contribution of faithbased organisations and the need to engage with communities from a faith perspective towards the European Institutions and other civil society actors.



Find out more by visiting the website:

<https://eu-cord.org>

Link with our programme groups by scanning this code.