



# LM International's Unique Selling Points



## Contents

<b>Introduction</b> .....	<b>2</b>	<b>Reach</b> .....	<b>7</b>
<b>Main objectives</b> .....	<b>3</b>	Countries where we work	
<b>Areas of expertise in programming</b> .....	<b>4</b>	Capacity and donors	
1. Social and economic inclusion		Present key consortia partners	
2. Sustainable health		Significant partnerships	
3. Claiming rights through education and literacy			
4. Integrated Water Resources Management (IWRM)			
<b>Our contribution to the SDGs</b> .....	<b>5</b>	<b>Our added values</b> .....	<b>9</b>
<b>Our approach</b> .....	<b>6</b>	Long-term perspective	
Basis and principles of our development work		Regional and country presence	
Human rights-based approach		Networks	
Basis and principles of our humanitarian work		Humanitarian–Development–Peace Nexus	
Accountability Standards		Innovative approach	
		Advocacy through loyal donors	
		<b>Innovations</b> .....	<b>11</b>
		<b>Contact person &amp; e-mail</b> .....	<b>11</b>

## Introduction

LM International (Läkarmissionen) is an innovative driven organisation founded on Christian core values that believes in empowering people so that they can reach their full potential.

LM International was established in 1958 by the then famous Swedish author and publisher Harry Lindquist. Harry combined his Christian faith with a strong conviction and belief in the inner ability of people to change their own future.

The head office is located in Stockholm, Sweden.



ILLUSTRATION: KRISTINE WIDLERT

## Main objectives

LM International focuses on sustainable and rights-based programmes in both humanitarian and development sectors **specialising in livelihoods, sustainable health, education and literacy, and WASH** directed towards the most vulnerable and marginalised communities.

**Our vision: Dignified life – Sustainable world.** A dignified life means that all human beings are unique and of equal value, and that everyone is entitled to live an empowered life and influence key decisions in their own life. A sustainable world means a world that is socially, economically and environmentally sustainable, where development meets current needs without compromising the ability for future generations to meet their own needs.

**Our mission: To save lives and empower people.** Our mission defines our approach to the Humanitarian-Development-Peace Nexus, also known as the Triple Nexus, through which we work preventively against emerging risks and crises and to counteract the causes of vulnerability in emergencies from a long-term perspective while promoting peace as the foundation for this. We apply a holistic approach where we not only save lives but also enable individuals to flourish reaching their full potential.

# Areas of expertise in programming

LM International's primary focus is to achieve sustainable change through focus on our four thematic specialist areas:

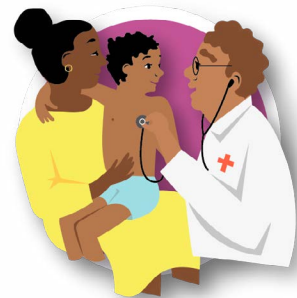


## Social and economic inclusion

Strategy-level outcome: Ensure economic and social inclusion for all through sustainable livelihoods.

## Sustainable health

Strategy-level outcome: Ensure well-being for all by securing good health and good living conditions.



## Claiming rights through education and literacy

Strategy-level outcome: Empower all rights holders through equitable and quality education.

## Integrated Water Resources Management (IWRM)

Strategy-level outcome: Secure access to clean water, hygiene and sanitation for all through sustainable practices.



# Our contribution to the SDGs

Our strategy-level outcomes, linked to each thematic area, also represent our direct contribution to the Sustainable Development Goals (SDGs) and the commitment to “Leave No One Behind” in the effort to eradicate poverty, end discrimination and exclusion, and to reduce inequalities and vulnerabilities. In particular, LM International’s engagement focuses on:



- **SDG 1 – End poverty** (1.2, 1.5)
- **SDG 3 – Good health and wellbeing** (3.1, 3.5, 3.8)
- **SDG 4 – Quality education** (4.5, 4.6)
- **SDG 6 – Clean water and sanitation** (6.1, 6.2, 6.b)

In addition to the above, LM International’s efforts are planned, realised and evaluated taking into consideration three cross-cutting issues: environment, climate, gender and conflict sensitivity. With this, we also focus on:



- **SDG 5 – Gender Equality**
- **SDG 13 – Climate Action**
- **SDG 16 – Peace, Justice and Strong Institutions**



# Our approach

## Basis and principles of our development work

### Human rights-based approach



We apply a human-rights perspective in all our work. This means:

- Identification of the rights holders' claims on human rights and the corresponding human rights' obligations of duty bearers.
- Identification of the direct, underlying and structural causes for non-fulfilment of rights.
- Assessment of rights holders' ability to claim their rights and of duty bearers to fulfil their obligations when designing programmes.
- Strategy development to strengthen the capacities of rights holders and duty bearers.
- Monitoring and evaluation of programmes need to follow both the process and the outcome and integrate aspects of participation, links to human rights, accountability, non-discrimination, empowerment and transparency in their results framework and monitoring system.

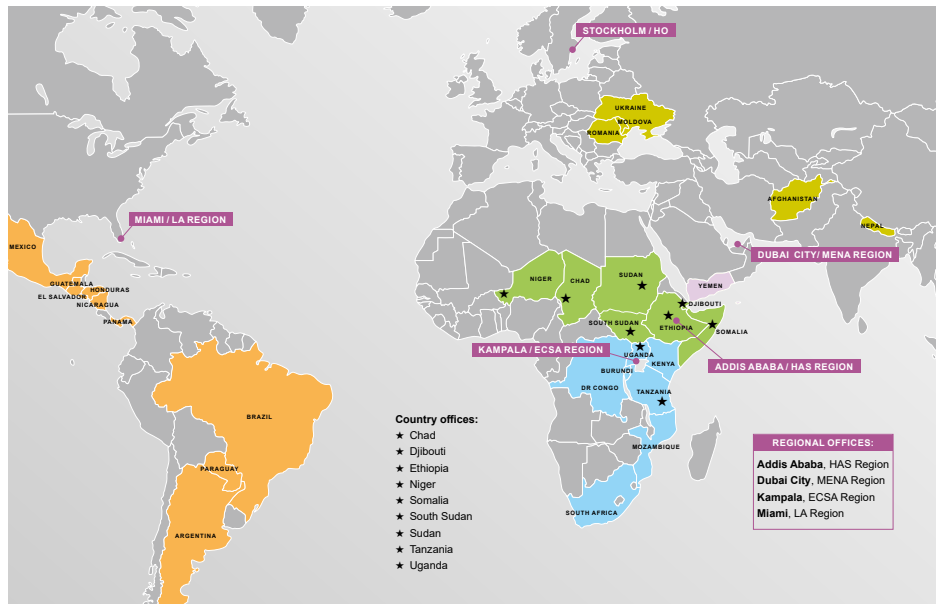
## Basis and principles of our humanitarian work

Based on International Humanitarian Law (IHL), our humanitarian action seeks to include both assistance and protection, and aims to save lives, alleviate suffering, and promote human dignity. In defining our humanitarian response, we seek to be broad enough so that we include preparedness, and thus enable the integration of Disaster Risk Reduction (DRR) and Resilience programming in humanitarian action.

Our humanitarian action is guided by Humanitarian Principles of humanity, impartiality, neutrality, and independence, which are codified in several instruments, including the Code of Conduct for the International Red Cross and Red Crescent Movement and non-governmental organisations (NGOs) in Disaster Response (ICRC Code of Conduct). We are a signatory to the ICRC Code of Conduct (<https://media.ifrc.org/ifrc/who-we-are/the-movement/code-of-conduct/signatories-to-the-code-of-conduct/>).

### Accountability Standards

LM International was through its operational part IAS (International Aid Services) one of the founding members of the Core Humanitarian Standard (CHS) Alliance. Our adherence to quality and accountability initiatives such as the CHS Commitments, and the Humanitarian Charter and Minimum Standards in Disaster Response by the Sphere Project, are key in upholding our accountability in the work.



## Reach

We operate in approximately 30 countries through collaboration with local partner organisations and via our nine country offices in Chad, Djibouti, Ethiopia, Niger, Somalia, South Sudan, Sudan, Tanzania and Uganda. In addition to the country offices and the head office in Stockholm, Sweden, we have four regional offices located in Addis Ababa (Ethiopia), Dubai City (United Arab Emirates), Kampala (Uganda) and Miami (USA) overseeing our work in Horn of Africa and Sahel (HAS Region); Middle East and Northern Africa (MENA Region); East, Central & Southern Africa (ECSA Region) and Latin America (LA Region).

## Countries where we work

### Africa:

ECSA Region: Burundi, DR Congo, Kenya, Mozambique, South Africa, Tanzania and Uganda.

HAS Region: Chad, Djibouti, Ethiopia, Niger, Somalia, South Sudan and Sudan

**Asia:** Afghanistan and Nepal

**Eastern Europe:** Moldova, Romania and Ukraine

**Latin America:** Argentina, Brazil, El Salvador, Guatemala, Honduras, Mexico, Nicaragua, Panama and Paraguay

**Middle East and Northern Africa:** Yemen

## Capacity and donors

- Total revenues (2020): MEUR 19.9 (SEK 209 452 011)
- Largest donors (2020): The Swedish public, FCDO, Sida, Save the Children, UNHCR, UNDP, UNICEF, the Swedish government, DERF and Swedish Radio Aid
- We hold an ECHO Framework Partnership Agreement (FPA) since 2019

## Present key consortia partners

Save the Children, Vétérinaires Sans Frontières Germany, Woord en Daad, World Relief, World Vision and ZOA.

## Significant partnerships

Our significant partnerships include local community and faith-based actors, the Swedish public, Swedish Mission Council, ZOA/FCDO, UNICEF/UNDP/UNHCR, Sida and UNOPS, ECHO, IAS-LM Alliance, Human Bridge, EU-CORD, MAF, Second-hand shops in Sweden, Swedish Fundraising Control, Swedish Radio Aid, Children of the World and Music Aid, Giva Sweden (the Swedish Fundraising Association), CONCORD, Strømme Foundation, Mäklarringen and KRIK.



PHOTO: HANS-JÖRGEN RAMSTEDT



# Our added values

## Long-term perspective

Since its establishment in 1958, LM International has kept to its firm commitment to strengthen civil society and achieve long-term sustainable results, and has thus managed to remain relevant. We continue to refine and advance our work through continuous learning within our thematic areas.

## Regional and country presence

We value our local anchorages, where our country offices are important natural pillars. These are supported by our established regional offices with an additional aim to come closer to our partner organisations in countries of operations. Through our long-standing partner organisations, we maintain relationships far outside our own context that contribute to a better understanding of different contexts and increased thematic knowledge.

Through our country offices and regional offices we have staff and resources on the ground locally at all times in order to ensure that the work is conducted in accordance with existing agreements and governing documents. With a high level of knowledge within both the development and humanitarian sector we are relevant in the whole development spectrum. Our deep understanding of the local contexts increases our capacity to anticipate and adapt to changes and swiftly react to emergencies. We have strong and trustworthy relations with rights holders, strong partnerships with local CBOs and CSOs, and long standing and effective relations with local stakeholders and other actors.

## Networks

We are a member of several important networks such as the Swedish Mission Council (SMC), EU-CORD, CONCORD, VOICE, CHS Alliance, Giva Sweden (the Swedish Fundraising Association), IDDC – The International Disability and Development Consortium (member through EU-CORD), GCE – The Global Campaign for Education (member through EU-CORD) and other relevant networks.

LM International has formed an alliance called IAS-LM Alliance together with IAS Denmark, IAS Germany, and IAS USA. The purpose of the alliance is to unite to strengthen the capacity to work towards transformation, dignity, empowerment and sustainability with those who are marginalised. It is also to support and mobilise resources for the operations conducted at LM International's country offices.

Due to our unique presence and collaboration, we are able to reach a wide variety of networks both internationally and nationally. These networks increase the flexibility of our organisation and provide a platform for effective collaboration and funding.

## Humanitarian-Development-Peace Nexus

Both the number and extent of global crises and disasters are growing, which means that it is becoming increasingly important to work preventively and to counteract the causes of vulnerability during emergency responses. In both our humanitarian action and development activities, we strive to enhance peace by adhering to “Do No Harm” and through including peace activities in programming, thereby ensuring engagement in the Triple Nexus. We drive change, we are highly motivated, and we provide quality aid (including adherence to international standards and principles). In all our work, both self-implemented and through local partners, our aim is to strengthen local resilience against future crises and disasters.



PHOTO: TORLEIF SVENSSON

## Innovative approach

We are committed to working innovatively for sustainable development. The world is changing, and it is of the utmost importance that we apply relevant methods that are adapted to the contexts in which we work. For this reason, we aim to collaborate with researchers and research institutes in the countries where we operate, primarily in relation to our thematic areas.

## Advocacy through loyal donors

A large proportion of our funds come from loyal private donors in Sweden. When we increase their knowledge of the world around them through our communication channels, they in turn become influential voices for our cause and help us collectively to advocate for people in vulnerability.

# Innovations

The Global Unit for Innovation & Digital Transformation at LM International focuses on developing sustainable and innovative solutions and collaborations from a global perspective. The unit leads the digital journey that we make together with partners and collaborations in Health, Water & Sanitation, Education, and ICT around green transition through innovation and digital transformation. These are some of the innovations that we have engaged in:

**Solvatten** – We are currently collaborating and distributing Solvatten solar safe water systems to our operations in Kenya and Niger. Solvatten is a portable water purifier that uses sunlight to heat the water so bacteria die and the water becomes potable. Solvatten also reduces the use of wood, for example in cooking.

**Peepoo** – LM International has with great results been part of the implementation of the Peepoo Sanitation Solution, which is a biodegradable toilet that has been used in approximately 60 schools in the Kibera slum in Nairobi, Kenya. Thanks to Peepoo, the school children can use the Peepoo bag during the day and no longer have to go home for a toilet visit. The urea inside the Peepoo biodegradable bag inactivates harmful pathogens (bacteria, viruses and parasites) within 6–8 weeks depending on the outside temperature. Once the sanitization process is complete, the Peepoo bag can be used as fertiliser on coffee farms in places like the slopes of Mount Kenya in northern Kenya.

LM International is also one of the core founders of *Sustaid – Partners for sustainable innovation in aid*, funded by Sida – The Swedish International Development Cooperation Agency. The initiative aims to meet the needs in the most vulnerable places affected by crisis and disaster. This is done by facilitating and creating better conditions for propelling sustainable innovations and solutions (products and services) in crisis and disaster. This is made possible through cross-sectoral collaborations and partnerships.

The aim is to bridge structural and cultural differences between aid organisations, business and innovation through new ways of working. A major focus is collaboration labeled “Partnership” in Sustainable Development Goal 17 in Agenda 2030”.

We have developed a specific literacy method in Latin America, based on the Laubach method and Constructivism, called Método Integral de Alfabetización (MIA) that is very successful. The Spanish literacy books began to be produced in Panama, Central America, and since we started to work with MIA in 2003 hundreds of thousands have become literate. Because of the success of the method we have spread it to other regions as well. In addition to Spanish, MIA is now adapted to Portuguese and French and used in Mozambique, Brazil and Niger.

We also continuously pilot climate smart approaches in the IWRM interventions in Sudan together with SWECO who is amongst the world leaders in climate change.



**Contact persons:**

**Josephine Sundqvist**, Secretary General, LM International Head Office  
josephine.sundqvist@lakarmissionen.se



**Markus Ask**, Global Partnership Manager, LM International Head Office  
markus.ask@lakarmissionen.se



LM International

LM International, Global HQ Office,  
Siktgatan 8, SE-162 88 Vällingby, Sweden